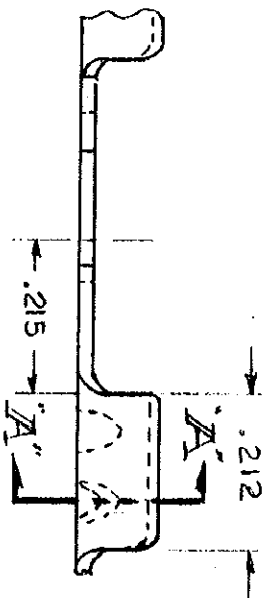
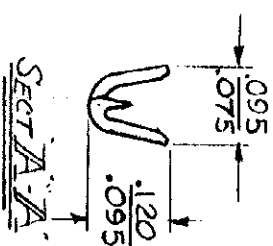
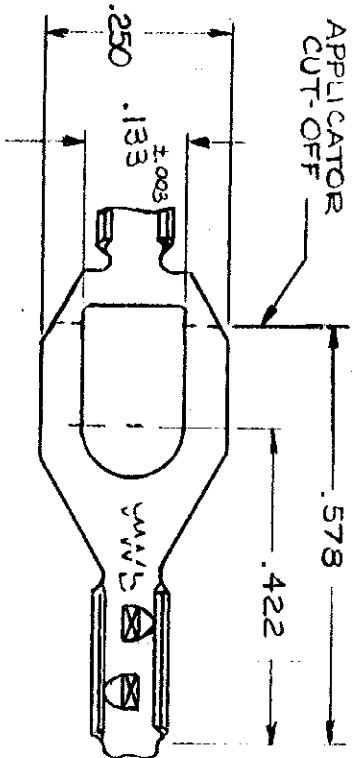


NUMBER
61498



CONTINUOUS STRIP ON REELS

MATERIAL & FINISH	TERMINAL NUMBER
.016-BRASS - NONE	61498-1
.016-BRASS - TIN	61498-2
.016-BRASS - PRE-TIN	61498-3

DIMENSIONS IN INCHES. DO NOT SCALE PRINT.

<p>©1968 BY AMP INCORPORATED. ALL RIGHTS RESERVED. AMP PRODUCTS COVERED BY PATENTS AND/OR PATENTS PENDING.</p>		<p>CUSTOMER COPY REFERENCE ONLY</p>	
<p>MATERIAL AND FINISH</p>		<p>AMP INCORPORATED HARRISBURG, PENNA.</p>	
<p>WIRE — RANGE — INSULATION #26-#22 AWG .035-.040</p>		<p>CLASS</p>	
<p>TOLERANCE EXCEPT AS NOTED ± 1° 0'</p>		<p>TYPE</p>	
<p>SCALE</p>		<p>LOC NO</p>	
<p>NAME</p>		<p>61498</p>	
<p>INSULATION</p>		<p>REV C</p>	
<p>SPADE PIERCING</p>			
<p>REVISION RECORD</p>			
<p>REVISION RECORD</p>	<p>ECN</p>	<p>DR</p>	<p>DATE</p>
<p>A 61498-3 A-3470</p>	<p>47</p>	<p>RR</p>	<p>12/17</p>
<p>B DRAFTING ERROR</p>	<p>A-47</p>	<p>RR</p>	<p>11/17</p>
<p>C REVISED</p>	<p>AC 1889</p>	<p>SS</p>	<p>11/17</p>
<p>DE</p>		<p>DATE</p>	
<p>APR 11/4/68</p>		<p>11-11-68</p>	
<p>CHK</p>		<p>CHK</p>	
<p>50</p>		<p>11-4-68</p>	